



MOBILE HIGH VACUUM- FUME EXTRACTION FE 340



FILTER EFFICIENCY

99,97%

BEST EXTRACTION TECHNOLOGY WITH 33.500 PA UNDERPRESSURE

- ▶ 5 m² active filter area: Long service life, decrease of spare part
- ▶ Low noise level <60 dB(A) at 100% engine output
- ▶ Brushless engine: Suitable for multi-shift operation
- ▶ 33.500 Pa underpressure: Maximum performance on long extraction distances
- ▶ Network-compatible: Remote access to parameters
- ▶ Equipped as standard with automatic start/stop: Reduction of energy costs
- ▶ Equipped as standard with automatic filter cleaning system

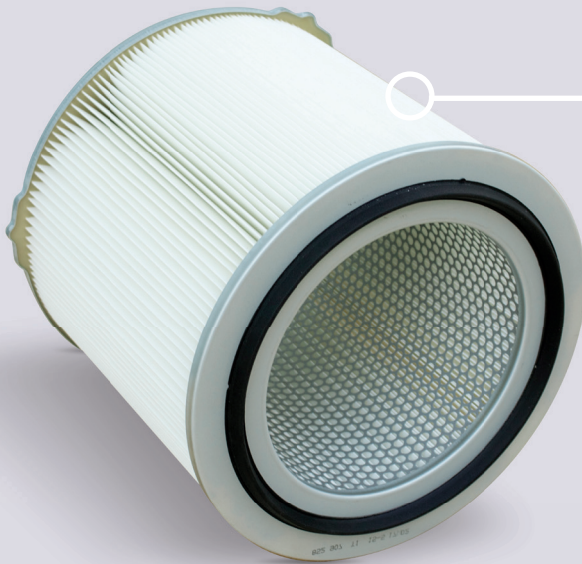


FE 340



Easy operating thanks to large illuminated pushbuttons

Stepless regulation guarantees an optimal gas shield for pore-free welding seams



5m² active filter area: more than 6 times larger effective surface than comparable products

ECONOMICALLY CONVINCING

Keep your energy costs low:

FE 340 has a stepless extraction power control by means of frequency converter. This allows an individual speed setting and minimizes energy

The automatic start / stop function via a sensor cable ensures that the device only runs when welding current flows.*

The heat recovery creates a pleasant effect: Compared to a central facility ventilation system, a loss of heating energy is prevented.

HEALTH PROTECTION WITHOUT COMPROMISES

You can rely on this performance:

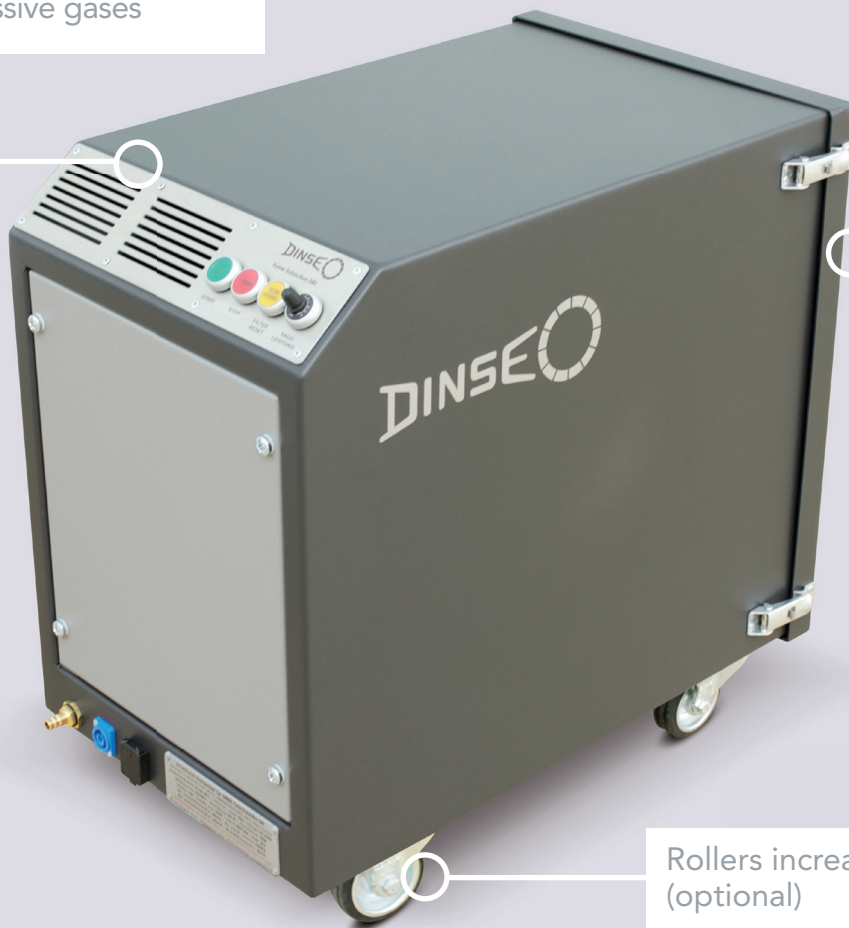
With a filter efficiency of 99,97% FE 340 is among the top products on the market. It ensures compliance with emission limits.

Where a lot of welding is carried out, a lot of noise is generated, which puts additional burden on the welder. The FE 340 with its engine smoothness produces a very low noise level of <60 dB(A).

Foil pouches with zipper ensure a gentle and save disposal of the filtered particles.

Aluminum housing: Low weight and high resistance against rust and aggressive gases

Easy and quick change of filter thanks to spacious access opening



Rollers increase the mobility (optional)

DURABLE & LOW WEAR

We use only the best components:

The wear-free brushless motor of the FE 340 ensures reliable operation even in multi-shift operation and reduces maintenance and spare parts.

The large filter area and a modern cleaning system with compressed air ensure a long service life of the filter. A spark separator reduces the risk of fire.

The bypass cooling system cools the unit and additionally cleans the ambient air.

INNOVATIVE & POWERFUL

The below features will convince you:

33.500 Pa maximum underpressure ensure a first-class extraction performance - thus the FE 340 is also ideal for long distances.

FE 340 is network-compatible. With a special software, remote access e.g. filter condition, filter change, suction power, start / stop is possible.

In case of a filter to change is needed, the system will let you know both visually and acoustically.

* Annual savings of € 108 with 8 hours of shift at 251 working days, arc time 40%, Industrial electricity costs 6ct / kWh

Technical data	
Connection voltage	230 V/50 Hz
Connection power	1,5 kW
Max. air volume flow	180 m ³ /h*
Max. underpressure	33500 Pa
Separation efficiency	99,97%
Dimensions (L x W x H)	680 mm x 430 mm x 625/700 mm***
Weight	approx. 39/42 kg
Operating temperature range	0° C to +50° C
Connection diameter	44 mm**
Active filter area	5 m ²
Max. duty cycle	100%
Protection class	IP 42
Max. sound level	<60dB(A)
Certification	W3
<small>* without sensing element ** optionally also with Ø 38 or Ø 51mm available *** with wheel set</small>	

Description	Part number
Fume extraction FE 340	629900098
Filter cartridge FE 340	629900100
Wheel set FE 340	629900099



**Make a system out of it:
DINSE Fume extraction torch
e.g. MR 340C / MRZ 304 / MRZ 305**

- ▶ Up to 500g lighter than comparable products
- ▶ Highly flexible handling
- ▶ Outstanding component access
- ▶ Gas or liquid cooled
- ▶ Up to 500A with 60% DC



DINSE is your dependable partner for the entire welding process. Get in touch with us to arrange an appointment for a personal consultation. We'll help you find the best solution for your application.



+49-(0)40-65875-0



info@dinse.eu

DINSE G.m.b.H. • Niewisch 9 • 22848 Norderstedt • www.dinse.eu