



FUME EXTRACTION SYSTEM



SEPARATION EFFICIENCY **99,97%**

NOW AVAILABLE WITH BALL JOINT



DIX MR / MRZ fume extraction torch

- ▶ Ball joint for highly flexible handling
- ▶ Up to 500g lighter than comparable products
- ▶ Outstanding component accessibility
- ▶ Proven welding technology

High vacuum fume extraction unit FE 340

- ▶ Brushless engine for multi-shift operation
- ▶ 33.500 Pa underpressure
- ▶ Automatic filter cleaning system
- ▶ Long service life due to 5 m² active filter area
- ▶ Reduced energy costs by usage of automatic start/stop function



DIX MR/MRZ



PERFECT THROUGHPUT

LIGHT & EFFICIENT

A clean affair

The DINSE fume extraction torch ensures an elimination of the welding fumes directly at the point of origin and contributes significantly to the protection of your employees.

The bypass flow can be adjusted with a simple thumb operation. Thus the protective gas coverage remains stable. High quality seams can be produced and re-work is reduced.

Extraction at greatly reduced weight

Each gram counts: Compared to competitive fume extraction torch sets of the respective performance class, the torch sets of the DIX MR/MRZ series are up to 500 grams lighter.

This reduces symptoms of fatigue and allows longer operating periods. The smooth surface of the flexible cover hose ensures ideal guiding properties and reduces friction.

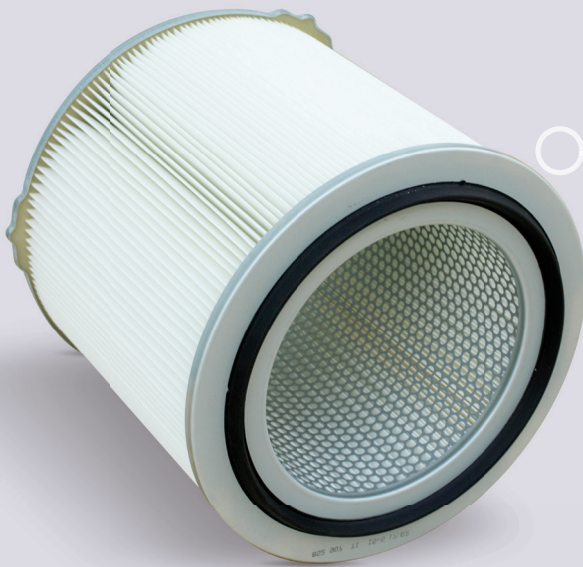
FE 340



Easy operating thanks to large illuminated pushbuttons

Stepless regulation guarantees an optimal gas shield for pore-free welding seams

5m² active filter area: More than six times larger effective surface than comparable products



ECONOMICALLY CONVINCING

Keep your energy costs low

The fume extraction unit FE 340 has a stepless extraction power control by means of frequency converter. This allows an individual speed setting and minimizes energy costs.

The automatic start / stop function via a sensor cable ensures that the device only runs when welding current flows.

HEALTH PROTECTION WITHOUT COMPROMISES

You can rely on this performance

With a filter efficiency of 99,97% FE 340 is among the top products on the market. It ensures compliance with emission limits of 1,25 mg/m³.

Where a lot of welding is carried out, a lot of noise is generated, which puts additional burden on the welder. The FE 340 with its engine smoothness produces a very low noise level of <60 dB(A).

Foil pouches with zipper allow a gentle and save disposal of the filtered particles.

Aluminum housing: Low weight and high resistance against rust and aggressive gases

Easy and quick change of filter thanks to spacious access opening



Rollers increase the mobility (optional)

DURABLE & LOW WEAR

We use only the best components

The wear-free brushless motor of the FE 340 ensures reliable operation even in multi-shift operation and reduces maintenance and spare parts.

The large filter area and a modern cleaning system with compressed air ensure a long service life of the filter. If a filter change is needed, the system will let you know both visually and acoustically. A spark separator reduces the risk of fire.

INNOVATIVE & POWERFUL

The below features will convince you

33.500 Pa maximum underpressure ensure a first-class extraction performance - thus the FE 340 is also ideal for long distances.

FE 340 is network-compatible. With a special software, remote access to e.g. filter condition, filter change, suction power or start / stop is possible.

TORCHES WITH BALL JOINT



MRZ 304
up to 500 A

MR 340C
up to 350 A

MRZ 305
up to 550 A

Also still available
without a ball joint

FUNCTIONALITY & ERGONOMICS IN BEST SHAPE

Welding in static constrained postures, in challenging positions or over a longer period of time can lead to substantial physical loads for the welder.

The new, high-quality ball joints in our fume extraction torches make working easier and relieve the welder. In combination with the ergonomic handle and the uncoupled cover hoses stress is minimized also in almost acrobatic positions.

The agile joints are movable into all directions and allow excellent handling and fatigue-free working. The cover hose is flexible and has very little rotational resistance.

The fume extraction torch sets DIX MRZ 304 and DIX MRZ 305 are available as liquid-cooled version. Additionally we offer the gas-cooled torch set DIX MR 340C.

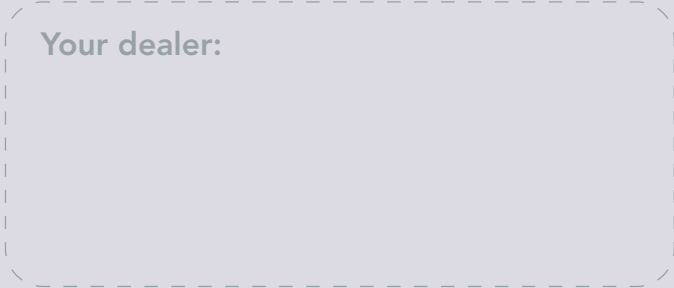
TECHNICAL DATA

Technical data fume extraction FE 340	
Connection voltage	230 V/50 Hz
Connection power	1,5 KW
Max. air volume flow	180 m ³ /h*
Max. underpressure	33500 Pa
Separation efficiency	> 99,97%
Dimensions (L x W x H)	680 mm x 430 mm x 625/700 mm***
Weight (stationary/mobil)	approx. 39/42 kg
Operating temperature range	0° C to +50° C
Connection diameter	44 mm***
Active filter area	5 m ²
Max. duty cycle	100%
Protection class	IP 42
Certification	W3 pending
Max. sound level	< 60 dB _A

* without sensing element
 ** optionally also with Ø 38 or Ø 51mm available
 *** with wheel set

Technical data DIX MR / MRZ		
DIX MR 340 C gas-cooled	350A/60% DC CO ₂	300A/60% DC M21
DIX MRZ 304 liquid-cooled	500A/60% DC CO ₂	450A/60% DC M21
DIX MRZ 305 liquid-cooled	550A/60% DC CO ₂	500A/60% DC M21

The part number for each product you will find in our product catalogue.



DINSE is your dependable partner for the entire welding process. Contact us and schedule an appointment for personal consultation today. Together with you we will find the best solution for your application.



+49-(0)40-65875-0



info@dinse.eu

DINSE G.m.b.H. • Niewisch 9 • 22848 Norderstedt • www.dinse.eu