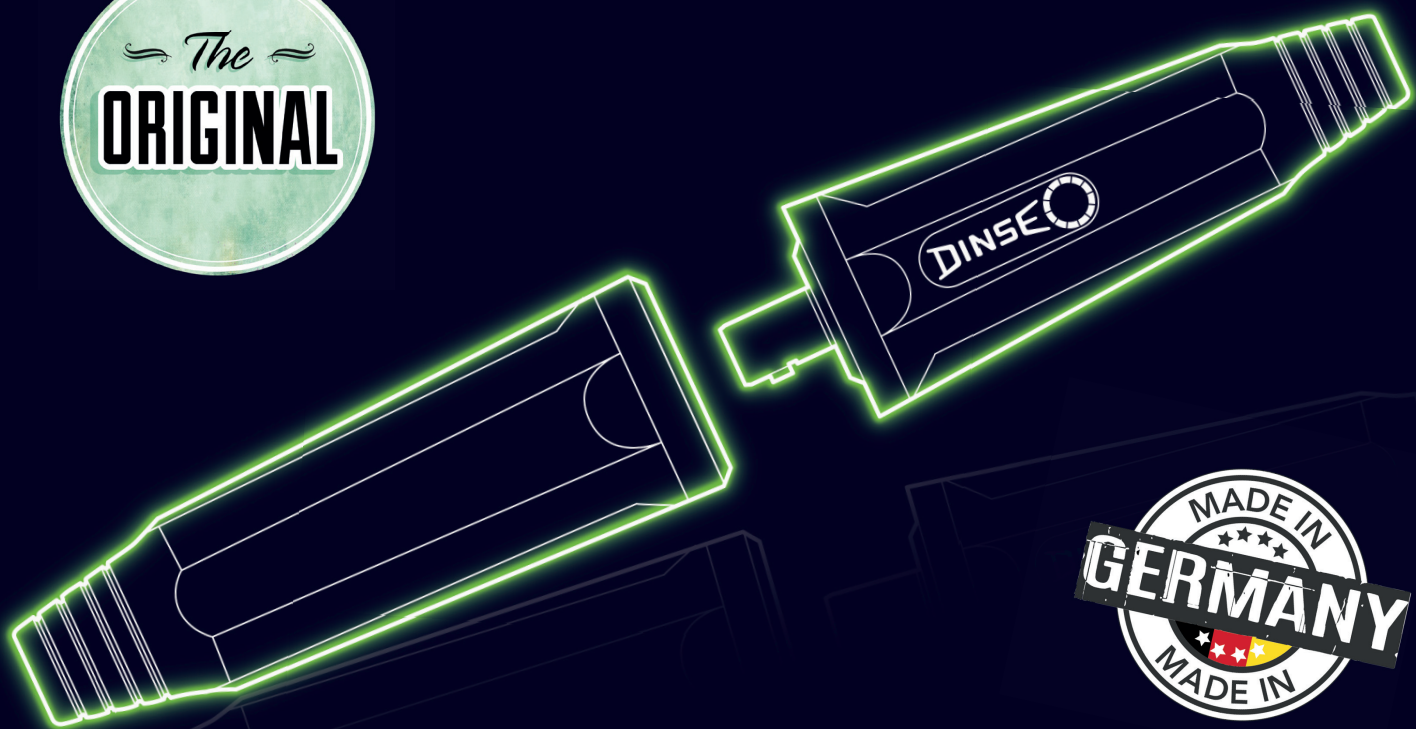


SOCKETS AND PLUGS



The quick and secure connection:

- ▶ High current carrying capacity
- ▶ Precise conical fit
- ▶ Minimum wear
- ▶ Compatibility with earlier series

ADAPTABLE TO ALL
CABLE DIAMETERS

SOCKETS & PLUGS

MINI

up to 25 mm² nominal cross-section

NEW DESIGN
All rubber sleeves
can be adapted
individually to your
cable diameter



DIX BKM 25

10-25 mm²

DIX SKM 25

STANDARD

up to 70 mm² nominal cross-section



DIX BK 25

16-25 mm²

DIX SK 25

DIX BK 50

35-50 mm²

DIX SK 50

DIX BK 70

50-70 mm²

DIX SK 70

WITH DOUBLE CLAMPING PLUS

up to 95 mm² nominal cross-section



DIX BKK 70

50-70 mm²

DIX SKK 70

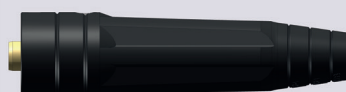
DIX BKK 95

70-95 mm²

DIX SKK 95

SPECIAL

up to 120 mm² nominal cross-section



DIX BKS 95

70-95 mm²

DIX SKS 95

DIX BKS 120

95-120 mm²

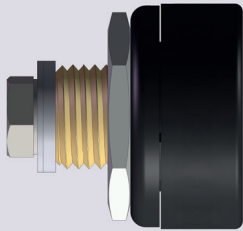
DIX SKS 120

Sockets and plugs
according to
IEC 60974-12

MOUNTING SOCKETS & -PLUGS

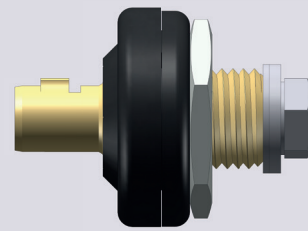
MINI

with connecting screw size M 8



DIX BEM 25

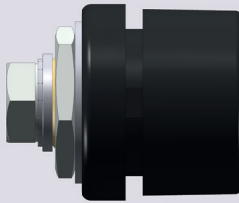
M 8



DIX SEM 25

STANDARD

with connecting screw size M 10 or M 12

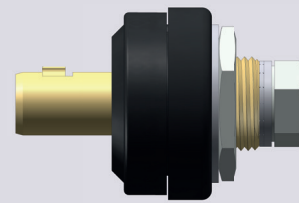


DIX BE 50/70

M 10

DIX BE 70/95

M 12

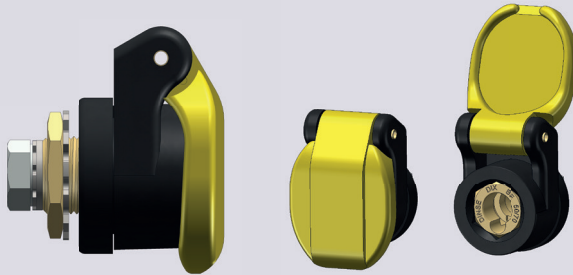


DIX SE 50/70

DIX SE 70/95

PLUS (with cover flap)

with connecting screw size M 10 or M 12



DIX BEK 50/70

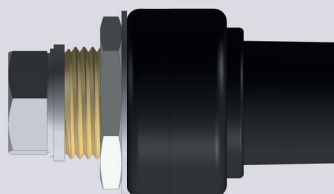
M 10

DIX BEK 70/95

M 12

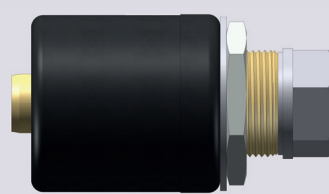
SPECIAL

with connecting screw size M 16



DIX BES 95/120

M 16



DIX SES 95/120

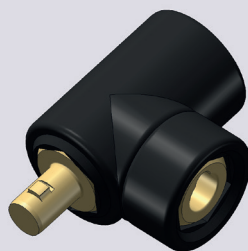
REDUCTION PLUGS & CABLE COUPLINGS

REDUCTION PLUGS*

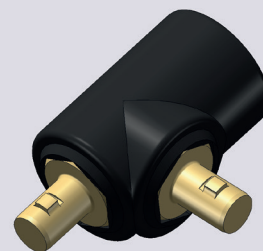


*Also feasible in other combinations

CABLE JOINT SOCKETS- & PLUGS



DIX KAB 70/95



DIX KAS 70/95

EFFICIENT CONNECTION SYSTEM

The solution for electrical devices

DINSE ORIGINAL sockets and plugs guarantee the highest current carrying capacity due to their precise conical fit. The optimum current transfer minimizes wear and ensures reliable, uncompromising results.

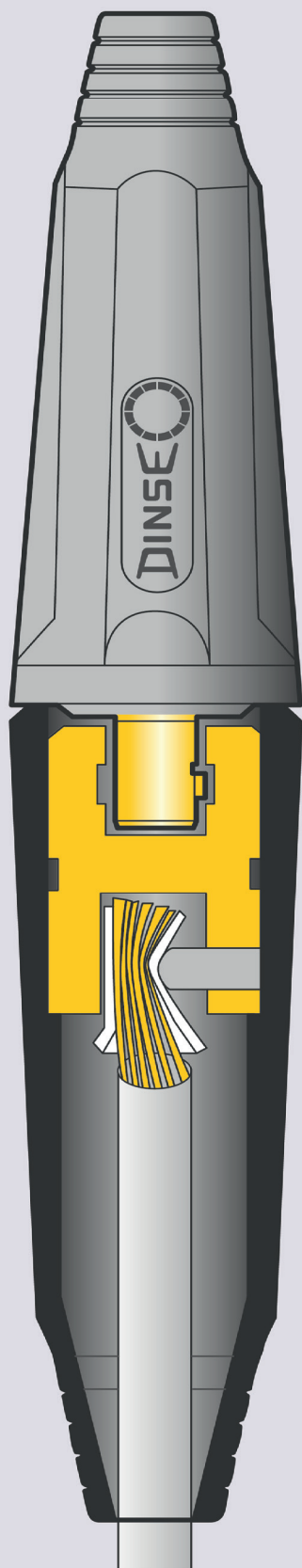
COMPATIBILITY & RELIABILITY

Everything fits

DINSE ORIGINAL sockets and plugs always match and fit together in all series. This allows you to combine them with each other if required - this ensures the highest economic efficiency. The ORIGINAL DINSE connector offers the highest degree of operational reliability and durability. All internal parts are protected by form-fit rubber sleeves and are reliably insulated.



THE DINSE ORIGINAL CONNECTOR



The DINSE ORIGINAL connector is a worldwide known brand name that stands for the highest quality, precision and load-bearing capacity for the current transitions of high-performance electric devices. It ensures a fast and absolutely safe connection of power cables.

The proven basic components of DINSE cable connectors have decisively contributed to trouble-free welding operations for more than 60 years. Arcing at the current transfer or fusion of the inner parts are excluded. This results in a long service life and low wear. Due to their precise conical fit, the DINSE ORIGINAL plugs and sockets are always at least as strong as the connectable welding cables.



Description	Nominal cross-section (mm ²)	Current capacity (max. at 60% ED)	Part name	Part number
Socket mini	10-25	190A	DIX BKM 25	121100020
Socket standard	16-25	190A	DIX BK 25	121100025
Socket standard	35-50	315A	DIX BK 50	121100050
Socket standard	50-70	400A	DIX BK 70	121100070
Socket plus	50-70	400A	DIX BKK 70	121110070
Socket plus	70-95	500A	DIX BKK 95	121110090
Socket special	70-95	500A	DIX BKS 95	121120090
Socket special	95-120	590A	DIX BKS 120	121120120
Plug mini	10-25	190A	DIX SKM 25	122100020
Plug standard	16-25	190A	DIX SK 25	122100025
Plug standard	35-50	315A	DIX SK 50	122100050
Plug standard	50-70	400A	DIX SK 70	122100070
Plug plus	50-70	400A	DIX SKK 70	122110070
Plug plus	70-95	500A	DIX SKK 95	122110090
Plug special	70-95	500A	DIX SKS 95	122120090
Plug special	95-120	590A	DIX SKS 120	122120120
Mounting socket mini	25	220A	DIX BEM 25	121300020
Mounting socket standard	50	330A	DIX BE 50/70	121300050
Mounting socket standard	70	400A	DIX BE 70/95	121300070
Mounting socket plus	50	330A	DIX BEK 50/70	121330050
Mounting socket plus	70	400A	DIX BEK 70/95	121330070
Mounting socket special	95	480A	DIX BES 95/120	121300120
Mounting plug mini	25	220A	DIX SEM 25	122300020
Mounting plug standard	50	330A	DIX SE 50/70	122300050
Mounting plug standard	70	400A	DIX SE 70/95	122300070
Mounting plug special	95	480A	DIX SES 95/120	122320120
Reduction plug	-	-	DIX RSS 50/25	124305025
Reduction plug	-	-	DIX RSS S50/B25	124325025
Reduction plug	-	-	DIX RSS 95/120	124300000
Cable joint socket	-	-	DIX KAB 70/95	123100070
Cable joint plug	-	-	DIX KAS 70/95	123200070



DINSE is your dependable partner for the entire welding process. Contact us and schedule an appointment for consultation today. Together with you we will find the best solution for your application.



+49-(0)40-65875 – 0



info@dinse.eu

DINSE G.m.b.H. · Niewisch 9 · 22848 Norderstedt · www.dinse.eu

Your DINSE Partner: